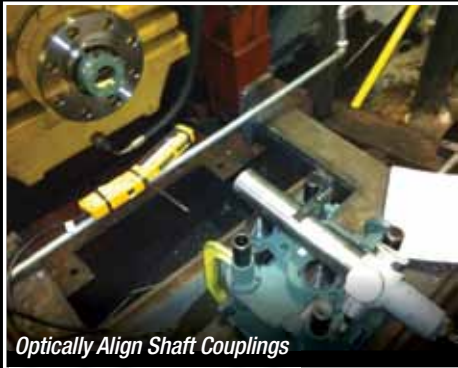




*Optically Inspect Engine Crankshaft Bores*



*Machine Propulsion Nozzle*



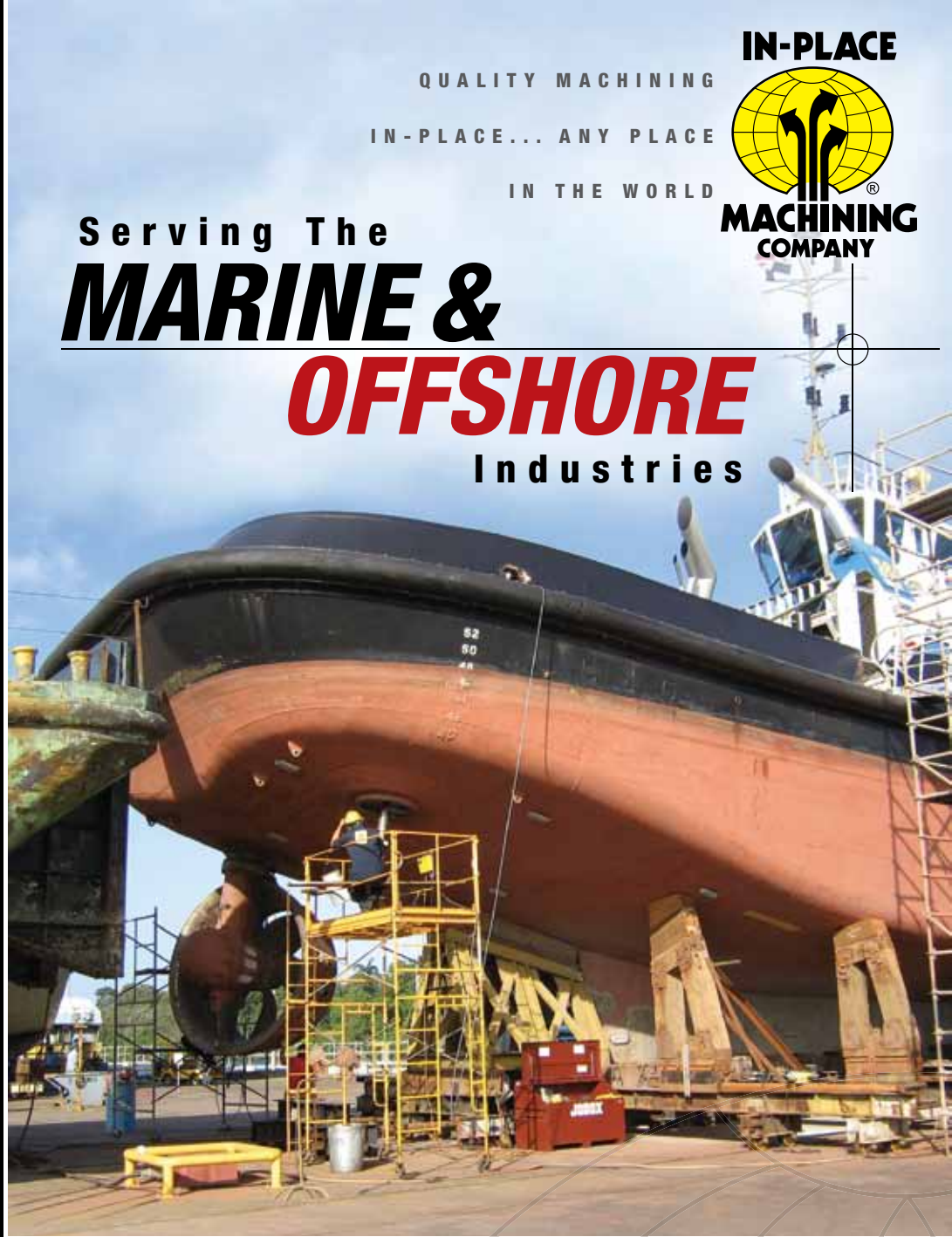
*Optically Align Shaft Couplings*



*Bore Stern Tube While in Dry-Dock*



*IPM Milwaukee Facility*



**IN-PLACE**

QUALITY MACHINING

IN-PLACE... ANY PLACE

IN THE WORLD



**MACHINING  
COMPANY**

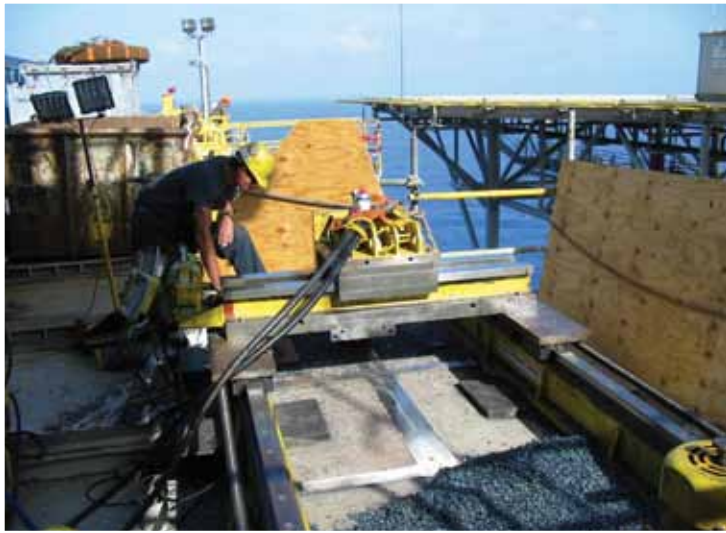
Serving The  
**MARINE &**

**OFFSHORE**  
Industries

**T**hese example photos represent only a few of the many types of services that In-Place Machining Company offers our marine and offshore customers. For over 35 years we have been the maritime industry's primary source for precision on-site and on-board machining. Our skilled technicians work worldwide on-shore, off-shore, or on voyage repairs. If you are an owner, agent, insurer, shipyard operator or manufacturer, In-Place Machining Company is your reliable and dependable source for on-site field machining In-Place... Any Place in the World.

- *Refurbish Engine Crankpins and Main Journals w/o Major Disassembly*
- *Engine and Pump Foundation Machining*
- *Rudder Post and Pintle Bore Alignment and Machining*
- *Propulsion Shaft Journals and Thrust Faces*
- *Cylinder Boring and Sleeving*
- *Coupling Bolt Hole Boring & Fitting*
- *Rudder Stock & Pintle Bore Taper Machining*
- *Stern Tube and Strut Boring*
- *Fix Cracks with Metalstitch® Cold Cast Iron Repairs*
- *R-Stamp Certified Welding*
- *Highly Engineered Repairs*





*Machine Foundation on Offshore Oil Rig*



*Machine Antenna Platform*



*Machine Stern Tube Seal Flange*

## CRANKPIN REPAIR



*Excavate Cracks*



*Anneal*



*Peen Straighten*



*Finish Machine and Grind*



*Machine Propulsion Shafts Using Portable Lathe*



*Machine Tapered Pintle Bore*



*Refurbish Thrust Face on Propeller Shaft*



*Metalstitch® Cold Cast Iron Repair*

# ***YOUR SINGLE SOURCE***

# ***FOR FIELD SERVICES***



*Fossil & Nuclear Power*



*Hydro-Electric & Pumped Storage*



*Bridge & Infrastructure*



*Steel & Metals Producing*



*Large Diesel Engine*



*Nuclear Decommissioning*



*Mining & Cement Producing*



*Pulp, Paper & Packaging*



*IPM Milwaukee Facility*



*Wind Power*



*Aerospace*

**Contact Us 24/7/365**

**414.562.2000**

**help@inplace.com**

QUALITY MACHINING  
IN-PLACE... ANY PLACE  
IN THE WORLD

