

Journal Repair Challenge Solved by IPM



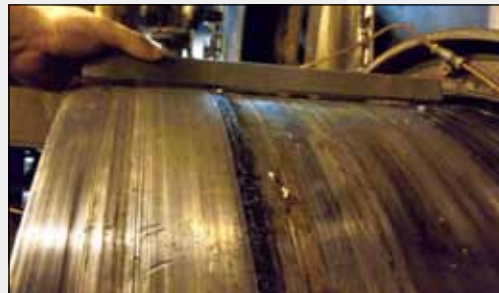
About IPM

In-Place Machining Company is a world leader in providing precision on-site machining and measurement services to a wide range of industrial customers including Mining & Cement Manufacturing; Nuclear, Fossil, Hydro and Wind Power Generation; Steel & Aluminum Production; Marine & Offshore; Pulp & Paper Manufacturing, Petrochemical; Bridge & Infrastructure; General Manufacturing; and Scientific and Military customers. The company's expertise and technological leadership comes, in part, from our ability to design and develop specialized machine tool systems with capabilities not available on the open market. With over 100 employees in multiple locations, and perhaps the largest inventory of dedicated on-site machining systems in the world, In-Place Machining Company is ready to serve you In-Place... Any Place In The World.



Onsite Bearing Journal Repair Brings Industrial Vacuum Drum Filter Back to Life

Milwaukee, WI, March 16, 2018 - A customer in the paper converting industry recently contacted In-Place Machining Company to consider **machining a Ø34" X 22" long bearing journal** and seal packing area on a vacuum drum filter which separates solids from liquids. When IPM technicians arrived onsite to inspect the damage, it quickly became obvious that this would not be a quick machine and polish job. The damage was so severe that it was not clear whether the journal could be salvaged.



Damage to Sleeve Prior to Journal Repair Onsite

IPM engineers immediately set to work designing an onsite **bearing journal repair** solution while working with the customer to provide a solution that would quickly bring the unit back on line while also promising maximum longevity. The journal repair that was settled upon was to machine away the damaged material and install a large diameter sleeve.



Sleeve After Successful Journal Repair by IPM

While technicians were **onsite machining the damaged journal** to prepare for installation of the sleeve, a custom press-fit repair sleeve was manufactured at the IPM machine shop in Milwaukee, WI. When the sleeve arrived at the site, IPM technicians heated it using our automated temperature control resistance heating system. IPM technicians followed a carefully planned procedure, the sleeve was installed, secured, and allowed to cool.

When the sleeve had cooled, the O.D. was machined to final size and geometry and the drum filter was placed back into service in a matter of days after first arriving onsite. This project's short schedule was made possible by the close communication and careful planning between IPM and the customer.



Machining Sleeve at IPM Milwaukee Shop

Do you have a difficult repair that has been deferred due to the critical nature of the piece of equipment? Don't wait until the damage becomes too severe to repair, **Contact Us** or **Call IPM Today at 414-562-2000** for a consultation to determine the solution to your maintenance problem.

QUALITY MACHINING
IN-PLACE... ANY PLACE
IN THE WORLD