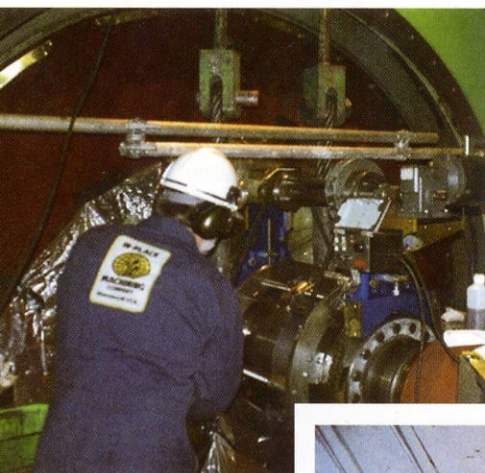




◀ Verifying Journal to better than $\pm .0005$ "



▲ Machine Turbine Journal while Rotor is installed



◀ Refurbishing Rotor Journal without shaft rotation



Turbine Journal restored In-Place ▶

JOURNAL REFURBISHMENT

WITHOUT ROTATING THE SHAFT

SEAL AREAS, THRUST RUNNERS, COLLECTOR RINGS

IN-PLACE MACHINING COMPANY IS THE ORIGINATOR OF THE PROCESS FOR JOURNAL, THRUST RUNNER, SEAL AREA, AND COLLECTOR RING REFURBISHMENT, WITHOUT ROTATING THE SHAFT

Many utilities and original equipment manufactures continuously utilize the services of IN-PLACE MACHINING COMPANY to refurbish damaged journals, seal areas, thrust runners and collector rings on turbines, generators, pumps, fans, motors, and other rotating equipment without shaft rotation with the rotor installed in the machine or when the rotor is 'blocked up out on the floor'.

Tolerances of roundness, concentricity, and lack of taper are held to within $\pm .0005$ " with an 8 micro-inch surface finish. In instances where rotation of the shaft is desirable, as for example during thermal metalspray, or on site plating, IPM also has all the tooling and equipment necessary to finish the shaft by machining and grinding.

By utilizing the IPM method for journal work without shaft rotation, the customer saves the time, expense, floor space, moving, and lifting necessary with a portable lathe. The results with the IPM method are frequently more accurate. IN-PLACE MACHINING COMPANY also has a Bearing Department dedicated to emergency bearing rebabbiting, so while skilled IPM Technicians are restoring the journal on site, the bearing can be rebabbitied at the IPM shop. ■

QUALITY MACHINING

IN-PLACE...ANY PLACE

IN THE WORLD

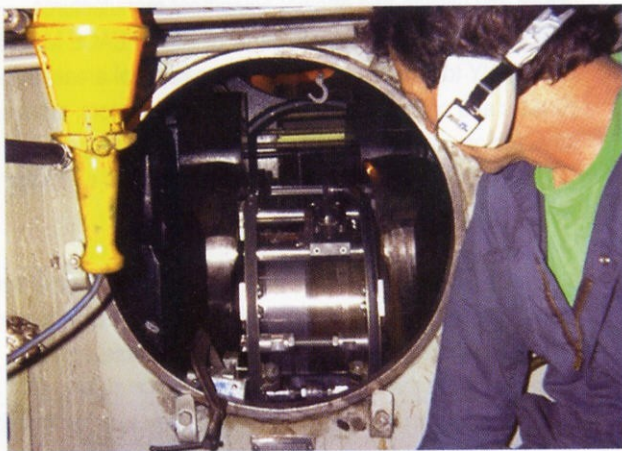




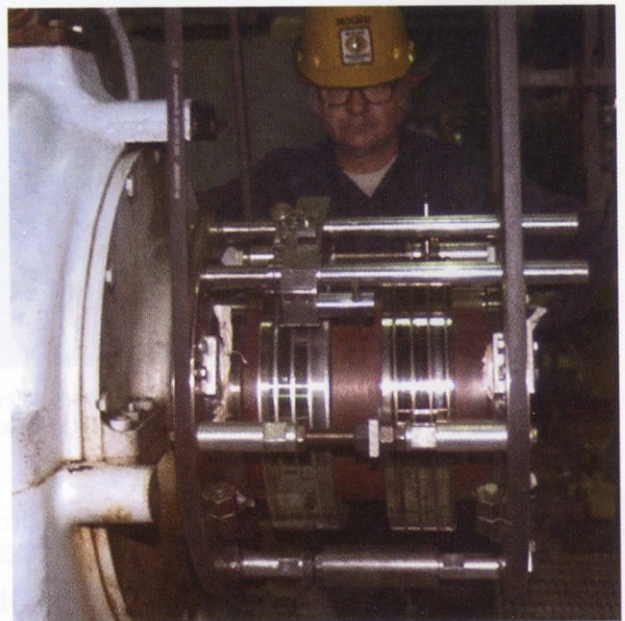
▲ IN-PLACE MACHINING of BOF (Basic Oxygen Furnace) Trunnion Journal



▲ Machining a Hydro Vertical Shaft Journal without rotating the Shaft



▲ Crankshaft Journal Refinishing *IN-PLACE*



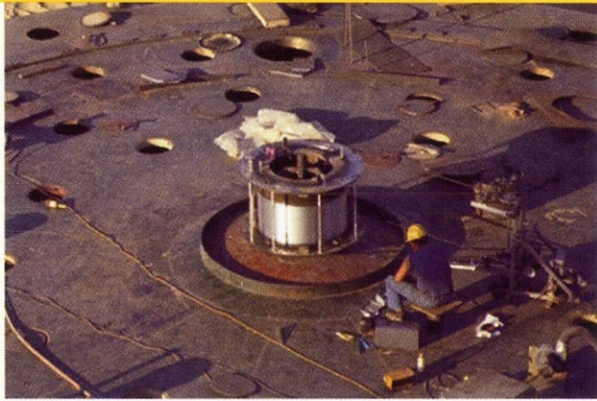
▲ Refurbishing Collector Rings without shaft rotation



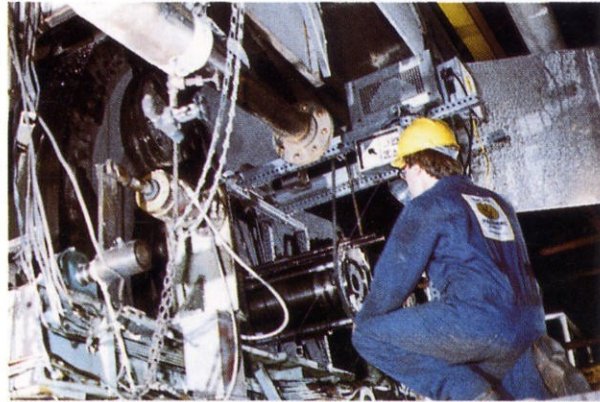
▲ Honing Turbine Journal to better than an 8 micro-inch finish

▼ Refurbishing Generator Journal and Seal Area without rotating the shaft

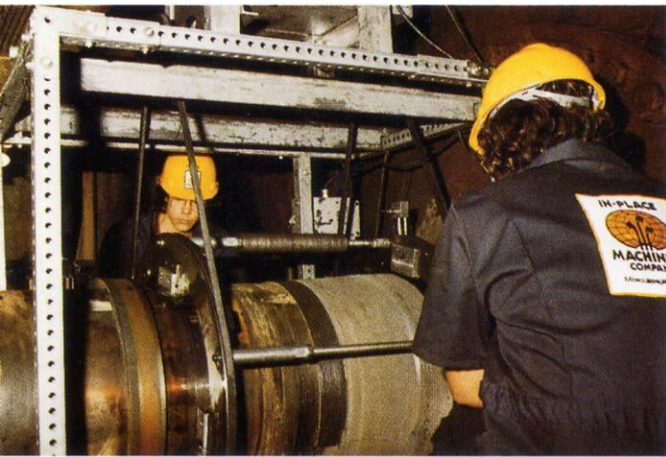




▲ Center Pivot of Walking Dragline being Machined



▲ Machining Journal on Automatic Machine

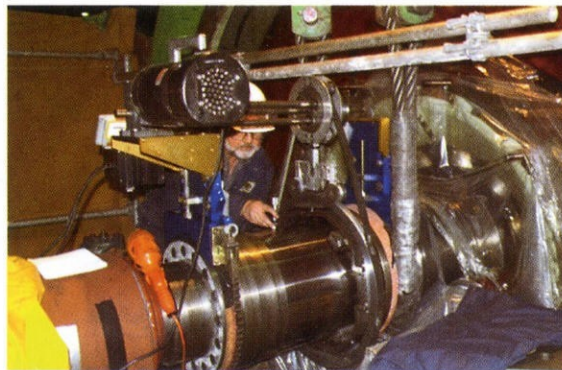


▲ Journal, first restored by Metalspray, now being machined



▲ Refurbishing a horizontal Hydro Shaft Journal

▼ Turbine Journal prior to honing



◀ Gaging of Generator Journal refurbished without rotating shaft



▲ Machining journal on Ball Mill Riding Roll

YOUR SINGLE SOURCE

FOR QUALITY SERVICE

IN PLACE MACHINING COMPANY has over 35 years experience in meeting and more often exceeding the specifications and expectations of the Power Industry. IPM services complete turbine outages or modifications by placing a portable machine shop and portable office at the power plant during the outage. Many power plants enter into annual contracts with IPM, so that Operating Personnel can get immediate service during emergencies. Whatever your requirements may be: IN-PLACE machining, Metalstitch® repair, journal refurbishing, welding, metallizing or rebabbiting bearings...IN-PLACE MACHINE COMPANY is your single source. ■

SOME OF OUR

MANY SATISFIED

CUSTOMERS ARE

General Electric
Westinghouse
ABB
Commonwealth Edison
Consolidated Edison
Carolina Power
Virginia Electric Power
Pennsylvania Electric
Public Service Oklahoma
DelMarVa
Illinois Power

Wisconsin Electric Power
Company
James River Paper Co.
Niagara Mohawk
Kansas City Power and Light
Public Service of Colorado
Voest Alpine
Siemens-Allis
TVA
Public Service Electric and Gas
...and many, many others ■

EMERGENCY SERVICE

In addition to assisting you during planned outages, IN-PLACE MACHINING COMPANY provides;

24-HR. EMERGENCY SERVICE

CALL 414-562-2000...day or night. 365 days a year. ■



IN-PLACE MACHINING COMPANY

Phone: **414-562-2000**

FAX: **414-562-2932**

E-mail: **help@inplace.com**

Web: **www.inplace.com**

Milwaukee, WI

Los Angeles, CA

Norfolk, VA

Chicago, IL