



In-Place Machining Company Acquires OASIS Alignment Services

Strategic Partnership Expands Precision Field Service Capabilities and Strengthens Commitment to Customer Service Excellence

In-Place Machine Company, LLC (IPM) is pleased to announce the acquisition of **OASIS Alignment Services, LLC** (OASIS) as part of a long-term growth strategy to expand reach and service offerings to customers and prospects across the U.S. and Canada. A globally recognized precision **field machining** company, IPM has long been the leader in onsite machining, diamond wire cutting, and industrial measurement services. Adding the experience, knowledge, and precision measurement and machine alignment capabilities of OASIS, increases IPM's growing **measurement and alignment division**, and exponentially enhances the benefits to customers across multiple industries.



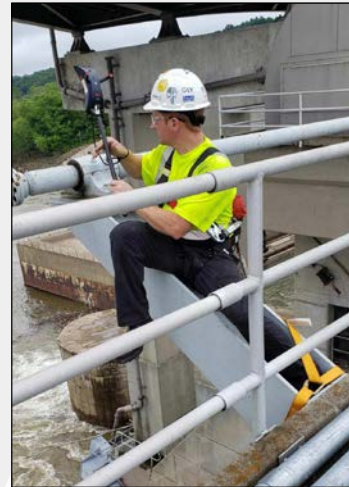
OASIS Engineer Inspects Component Alignment at Paper Mill

"In-Place Machining could not be more excited about the addition of OASIS Alignment Services to our Team," said Dean Flint, President and CEO of IPM. "Their culture, geographic footprint, expertise in the alignment space, and their experienced high caliber group of technicians are a perfect fit for our growth strategy."

"It was extremely important to me that OASIS join forces with a company that fully understands what it means to be in the field service industry," said Ray Masse, former owner and CEO of OASIS Alignment Services. "I firmly believe



Laser Tracker Captures Roll Alignment Data



Precision Measurements

that we found the right partner in In-Place Machining."

Brian Hiltunen, President of OASIS Alignment Services, added "In the field service business, your people are your greatest asset. Both IPM and OASIS strongly value and believe in our people, and our company cultures are nearly identical." Mr. Hiltunen continued saying, "Myself, as well as the entire OASIS team, are excited to be part of **In-Place Machining Company** and the potential for growth as a result of our partnership."

OASIS Alignment Services provides 3D precision measurement, machine alignment, and mechanical services out of nine service centers located in New Hampshire, North Carolina,

Florida, Ohio, Wisconsin, California, Washington and Québec and Ontario, Canada. Their fleet of highly precise portable metrology instruments includes Leica AT960 and AT403 laser trackers, portable measuring arms, laser scanners, and optical tooling.

IPM also recently acquired **Exact Metrology**, an ISO 9001:2015 and AS 9100 Rev D certified company that provides contract measurement and 3D scanning services, metrology equipment solutions, and hardware and software rentals. Exact Metrology: A Division of In-Place Machining Company has locations in Ohio, Wisconsin, and Illinois.

With the acquisition of OASIS Alignment Services, all IPM customers will not only benefit from expanded precision field services, but closer proximity to these services from eighteen locations in the U.S. and Canada.



OASIS Metrology Engineer Accurately Maps Data for Layout Work

"The combination of Exact Metrology and OASIS Alignment Services as divisions of IPM give our great company a breadth and scale of high-end precision measurement capabilities that are unmatched in the industry," noted Mr. Flint.

Contact Us Today— To learn more about OASIS Alignment Services visit oasisalignment.com. For more information on IPM's unsurpassed field machining services, Call 414-562-2000 or visit inplace.com.