



Visit IPM at AISTech 2022 and Meet the New IPM Measurement Services Division: OASIS Alignment Services & Exact Metrology!

In-Place Machining Company invites you to visit us at **Booth 2541** during **AISTech, the Iron & Steel Technology Conference and Exposition 2022** being held **May 16-18** at the David L. Lawrence Convention Center in Pittsburgh, PA. AISTech provides a global perspective on today's marketplace by featuring technologies from all over the world that help steelmakers to compete more effectively.

Visit Booth 2541 and Discover Your One Source for On-Site Excellence

On-site industrial services have reached a new level of excellence! Stop by our booth and meet with representatives from IPM and

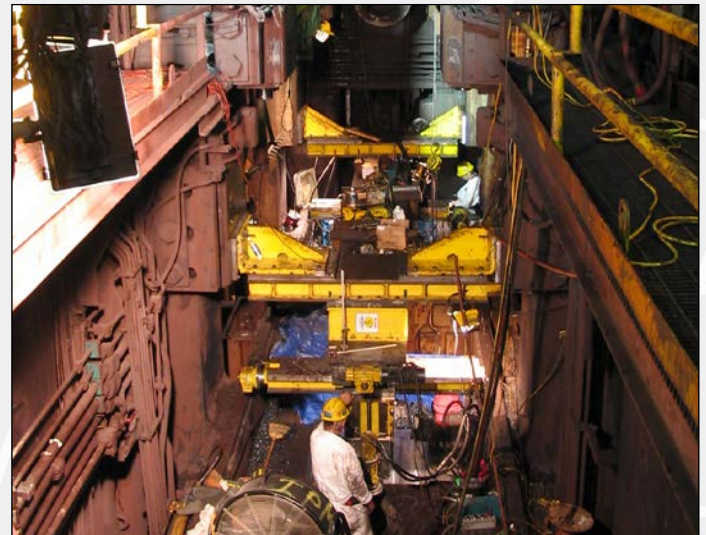


Machine 14 Housing Faces & Seats Simultaneously

IPM's new Measurement Services Division: OASIS Alignment Services and Exact Metrology. The team will be on hand to share the many exceptional on-site solutions our steel customers will benefit from by using one experienced source.



On-Site Gearbox Refurbishment



Machining Seat Bases On-Site

- On-Site [Field Machining](#)
- Large Scale [Cutting & Drilling Services](#)
- [Metalstitch®](#) Cold Cast Iron Repair
- [Certified Welding](#)
- Machine Alignment from [OASIS](#)
- Precision Measurement & 3D Scanning from [Exact Metrology](#)

We look forward to seeing you in Pittsburgh at **AISTech 2022**, so we can discuss how In-Place Machining Company can meet your project needs. For show details or to register for the event, visit the [AISTech 2022 Website](#), and be sure to find **IPM in Booth 2541** on the [AISTech 2022 floor plan here](#).

As the recognized leader in field machining and precision measurement services, IPM provides more [on-site repair services to the metals producing industry](#) than any other company in the world.

Visit Us at inplace.com to learn more about our company and the services we provide, or feel free to [Contact Us](#) or call **414.562.2000**.

QUALITY MACHINING
IN-PLACE... ANY PLACE
IN THE WORLD